



2026 PARENT HANDBOOK



Camp Hay Day

We are **thrilled** to be able to offer summer camps to kids this summer! Our mission has always been to provide children with a week of fun activities in an environment where they will be cared for and ministered to.

TABLE OF CONTENTS

Onsite Activities	2
Offsite Activities.....	3
What To Bring.....	4
Camp Rules & Dress Code.....	5
Morning Drop-Off.....	6
Afternoon Pick-Up.....	6
Registration & Refunds.....	7
Camp Leadership Team.....	8
Camp Organization.....	9
Schedule.....	1

“Who should I talk to if I have more questions?”

Camp Director: Abbie Fitch

camp@harbourfellowship.com

519.889.1987

Director of Family Ministry: Chrissy Payne

chrissy@harbourfellowship.com

905.984.5500 x 204



ONSITE ACTIVITIES

This week is farm themed! Each day will involve onsite activities designed to encourage active learning, friend making, and fun!

LARGE GROUP: In the morning campers will learn the gospel over the course of the week. In the afternoon we will debrief and give team point updates before dismissal.

SMALL GROUP: A time to discuss the day's lesson and message as a group and work on their booklet.

OUTDOOR GAMES: Games and variations of traditional sports. Includes time for campers to recite their memory verses to collect team points.

ATRIUM GAMES: Gaga ball, bracelet making, board/card games, and free play.

CRAFT: Crafts, art, and constructive activities linked to the week's theme and that day's lesson.

RECAP & SNACK: Watching a skit videotaped and performed by their leaders that teaches the day's lesson through a silly story. They can eat a snack at this time.

LUNCH: Please send your child with a lunch, other than on PIZZA Fridays! Pizza is included in the price of camp. You will have an opportunity to sign up during the week of camp.

OFFSITE ACTIVITIES

When are you offsite?

In order to welcome as many campers as possible, we split the camp into two cohorts. The whole group enjoys large groups, lunch, and end-of-day dismissal together. Cohort A spends the morning at the church, rotating through stations, while Cohort B goes offsite, and then they swap for the afternoon (see Schedule on page 10).

Bill Burgoyne Arena and Playground

MONDAY-THURSDAY

The arena will NOT have ice in it, essentially turning it into a fun gym space! Campers will engage in organized gym games indoors, then snack time and free time on the playground and green space. We will maintain leader ratios throughout the whole time off site.

Jordan Splash Pad

FRIDAY

Water Day! Make to send your kid with appropriate swimwear (see Dress Code on page 5) to enjoy the splashpad on this day. Same schedule as Monday-Thursday, they will just go here instead of Bill Burgoyne Arena and Playground.

How will you ensure that people who aren't campers or camp leaders will not come in contact with my child?

We have many safeguards in place to try and prevent people who are not a staff member at Harbour or part of camps from interacting with your child.

1. Mandatory name tags for leaders to identify themselves as safe.
2. Enforcing all visitors to check in at the main office.
3. Volunteers monitor the hallways and grounds to ensure safety.
4. There are Bill Burgoyne Arena staff on site that are screened and trained to be around children. We have also rented the entire space, so there will not be anyone from outside the camp in the building.

WHAT TO BRING

- **OUTDOOR PLAY CLOTHES:** Campers should dress prepared to be outdoors most of the day, rain or shine!
- **SPARE CLOTHES:** Please pack another set of clothes to wear just in case their clothing gets wet or messy.
- **SUNSCREEN & BUG SPRAY:** Please send campers with this applied before they arrive. We will assume they are prepared to be in the sun. Please also send both labeled with their name so leaders can help them reapply as necessary.
- **LUNCH & LIQUIDS:** Please pack food and a refillable water bottle (no pop please). They will be more active than at school and staying hydrated is the number one way to prevent sunstroke. We will have water bottle refill stations.
- **SNACKS:** Campers will have the opportunity to eat a snack they pack in the morning, then in the afternoon we will be providing a group snack. If you have allergy concerns please list them in registration.

Friday = Pizza Day & Water Day

- **PIZZA:** Friday we will serve a pizza lunch, but please still pack snacks! A gluten free option is available. Pizza is included in the price of camp and orders will be taken by leaders at the beginning of the week.
- **SWIMWEAR:** Please pack a bathing suit (see Dress Code on page 5), towel, and shoes that can get wet on Friday. We will be going offsite to the Jordan Splash Pad that day!

WHAT NOT TO BRING

- **NUT PRODUCTS:** Please help us keep campers with allergies safe at camp.
- **MONEY:** Campers will not have the opportunity to buy things during the day, so they won't need cash with them.
- **ELECTRONICS:** Campers will not have the opportunity to use electronics during the day.

CAMP RULES

“AT CAMP WE RESPECT...”

G



GOD

O



OTHERS

P



PROPERTY

S



SELF

Dress Code

Campers and leaders must be able to enthusiastically participate in all activities with modesty and without fear of ruining clothes. Our goal is to make camp safe and comfortable for everyone.

Everyday:

- Shirts and shorts should be an appropriate length; no undergarments and midriffs should be visible.
- No offensive slogans or profanity on clothing.

Swimwear:

- Guys wear swim trunks. No sport shorts, speedos, or short shorts. They must fit well.
- Girls should wear swimsuits that cover the midriff, wearing either a one-piece or a two-piece with a dark t-shirt on top.

MORNING DROP-OFF

Regular Drop-Off: 8:45-9:00

Extended Care Drop-Off: As early 8:00

1. Bring camper(s) to Check-In Table at Church Entry (see photo below). On Monday campers will be assigned their Colour Group for the week.
2. First Line of Attendance: Campers will be brought inside by a leader and directed to another Check-In Table where they will receive their name tags.
3. Second Line of Attendance: Campers will be directed to the auditorium with their Colour Group Leader to put their things at their home base and take attendance.

AFTERNOON PICK-UP

Camper Safety is our top priority! Please read carefully.

1. When you arrive, please park in the available parking space (see photo below).
2. Walk to your child's colour group and remain behind the line of pylons.
3. Once all campers are accounted for, Directors will announce that you can proceed past the pylons to your child's leader.
4. Check-in with their leader so that your child can be dismissed and the leader has the opportunity to provide you with any information you may need regarding the week.

I forgot my child's colour group!

Don't worry! Ask a leader and they can connect you with a Director. They have a Master List and can locate them for you.

"What if it rains?"

If weather conditions do not suit this outdoor dismissal plan you will get an email with our new dismissal plan.

"I need to pick them up early"

Please email Abbie (see page 1) with any changes in camper information or pick-up/drop-off plan.



REGISTRATION

When can I register?

Online registration opens February 22nd! There will be a 20% off Camp Discount active for that day only! Details will be on the Harbour website.

What is the cost?

Camp costs \$140/child. We offer a multi-child family discount. Third child and beyond are \$100.

Do you offer extended care?

Yes, we offer extended care. This would allow drop off at 8AM and pick up at 5PM. The additional cost is \$30/child for extended care.

Are scholarships available?

Yes, we offer scholarships! We would never want any child to miss out on a camp experience because of finances. Please email Abbie (see page 1) for the Scholarship Request Form.

Can I request a friend/relative to be in my child's small group?

Yes! We try to accommodate all requests while keeping campers of similar ages together in group. There is a space to write requests during registration.

Is there a waitlist?

Yes. In the event that the camps fill up, please email Abbie (see page 1) to be added to the waitlist. You will be contacted as spaces become available.

Refunds

Our Policy:

A full refund will be issued if requested 2 full weeks before camp runs.

An administration fee of \$10 will be charged to refund.

Email Abbie to start this process (see page 1).



CAMP LEADERSHIP TEAM

What is the ratio of leaders to campers?

Groups will be composed of approximately 20 campers with 3 leaders with their group. In addition to your child's group leaders there are also staff dedicated to helping campers with special needs who may be part of your child's group. There is also a Camp Director, Station Leaders, and year-round ministry staff available to help and provide extra support to campers as required.

Who will my child's leaders be?

Your child will interact with leaders who really care about them – both paid staff and volunteers. Paid staff are 18 years of age and older. Your child may have a leader who is an adult volunteer who will be trained and will work alongside paid staff members. Additionally, your child may interact with some of our amazing student leaders who will be putting on camp programming throughout the week as part of their leadership development. If your child has special needs, they may be assigned a trained one-on-one support person.

If you are interested in volunteering at Harbour Summer Camps, please contact Abbie (see page 1).

How do you screen camp staff and volunteers before they can work or volunteer at camp?

All paid staff members are required to complete an application, interview, and references to work at camp. Additionally, they are required to obtain a police check and complete mandatory training. Our volunteers also complete an application/paperwork process, provide Police Checks if over 18, and complete our mandatory training.

What type of training do leaders receive?

General camp training includes emergency management, behaviour management de-escalation strategies, and training on all camp protocol. Some staff receive additional training on how to support campers with special needs. Additionally, many of our staff are trained in First Aid.

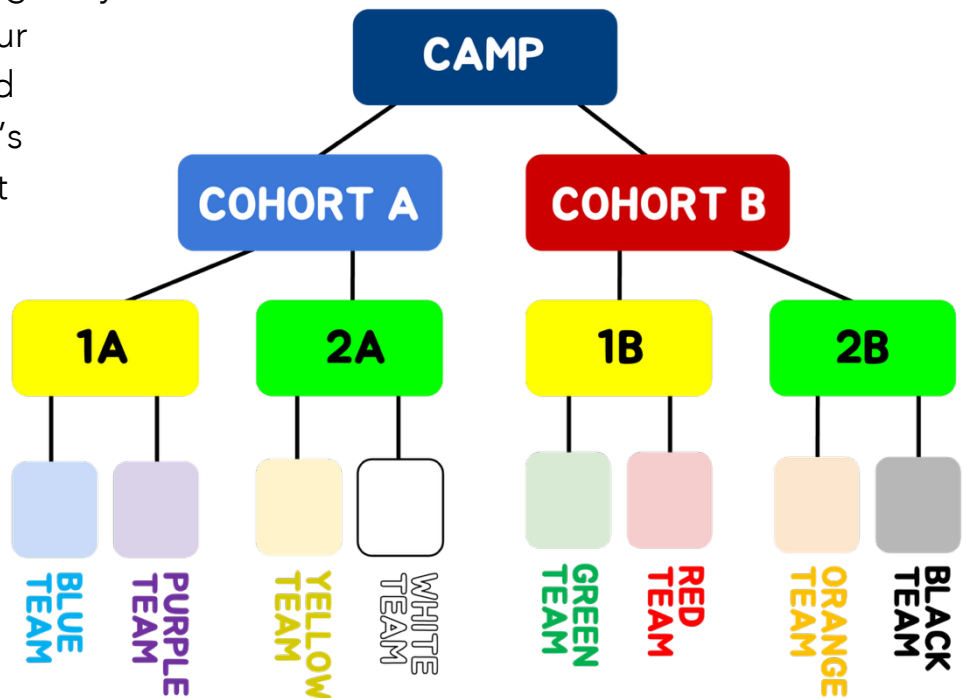
CAMP ORGANIZATION

What will camp groups look like his year?

The camp is split in half into Cohorts A and B. Each cohort has 2 smaller groups consisting of a quarter of the camp. Then those groups are split one more time into our Colour Groups. Campers are arranged into Colour Groups based on age, friends, and leaders. Cohort are divided so that siblings are on/off-site at the sam4 time facilitating early

pick-up if necessary. Colour Groups have 3 leaders and 15-20 campers. Your child's Colour Group is important to know for Afternoon Pick-Up (see page 6).

It will also be your child's team for the week, and they will compete for points throughout camp to win the week-end trophy.



Will camp be fun?

Yes! Not only do we want to do everything in our power to keep campers safe, we want to do everything in our power to make camp FUN! We hire a creative camp team to find the best and most engaging activities for campers with a wide variety of interests. Our campers rotate through their activities, so they are always moving, and busy with their teams!

See the “Daily Schedule by Colour Group” on page 10, the Camp Organization Chart corresponds to the schedule.

DAILY SCHEDULE by Colour Group

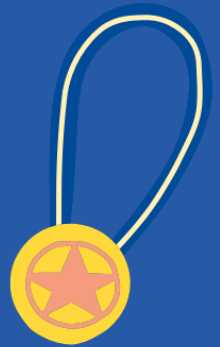
Time	Cohort A					Cohort B				
	Blue Team	Purple Team	Yellow Team	White Team	Green Team	Red Team	Orange Team	Black Team		
8:00					EXTENDED CARE					
8:45					DROP-OFF					
9:15					LARGE GROUP					
9:45		Travel				Bus Ride				
9:50	Recap & Snack	Outdoor Games	Small Group	Atrium Games						
10:10		Travel								
10:15	Craft	Recap & Snack	Outdoor Games	Small Group	Playground			Arena		
10:35		Travel								
10:40	Atrium Games	Craft	Recap & Snack	Outdoor Games						
11:00		Travel								
11:05	Small Group	Atrium Games	Craft	Recap & Snack		Snack				
11:25		Travel								
11:30	Outdoor Games	Small Group	Atrium Games	Craft	Arena			Playground		
11:50		Travel								
11:55		LUNCH								
12:15		Silly Songs				Bus Ride				
12:35		Bus Ride								
12:55						LUNCH				
1:00						Silly Songs				
1:20	Arena					Travel				
1:25					Craft	Outdoor Games	Small Group	Atrium Games		
1:45				Playground		Travel				
1:50		Group Snack			Recap & Snack	Craft	Outdoor Games	Small Group		
2:10						Travel				
2:15	Playground				Atrium Games	Recap & Snack	Craft	Outdoor Games		
2:35						Travel				
2:40				Arena	Small Group	Atrium Games	Recap & Snack	Craft		
3:00					Travel	Travel				
3:05		Bus Ride			Outdoor Games	Small Group	Atrium Games	Recap & Snack		
3:25					Travel	Travel				
3:30				LARGE GROUP						
3:45				DISMISSAL						
4:10				EXTENDED CARE						
5:00				END OF DAY						

YOU'RE INVITED TO

THE CLOSING CEREMONY

CAMP HAY DAY

Join us for a brief ceremony to close the camp week! The campers will share what they've been doing all week and then the winning team will be announced and awarded. More details to come with registrations.



FRIDAY, JULY 24
TIME TBD
(RIGHT BEFORE PICKUP)
AT HARBOUR FELLOWSHIP
CHURCH





**Who should I talk to if I have
more questions?**

Camp Director: Abbie Fitch
camp@harbourfellowship.com
519.889.1987

Director of Family Ministry: Chrissy Payne
chrissy@harbourfellowship.com
905.984.5500 x 204